

Wentylator chemoodporny CMVeco



ZASTOSOWANIE

Wentylator przeznaczony do transportu medium niezapalnego, zawierającego agresywne związki chemiczne. Typowe obszary zastosowania: dygestoria i laboratoria chemiczne przemysł chemiczny, farmaceutyczny, spożywczy obiekty użyteczności publicznej

KONSTRUKCJA

- wirnik z łopatkami pochylonymi do przodu wykonany z polipropylenu PPs
- obudowa wykonana z polipropylenu PPs
- podstawa pod silnik wykonana z blachy galwanizowanej
- figura standardowa LG90
- maksymalna temperatura tłoczonego medium 70°C (wykonanie standardowe) lub 60°C (wykonanie ATEX)
- temperatura otoczenia silnika od -20°C do +40°C

SILNIK ELEKTRYCZNY

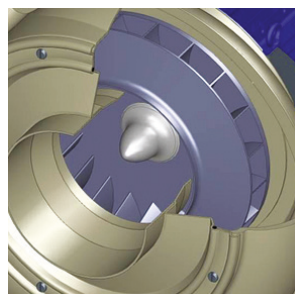
- asynchroniczny, jednofazowy, 230 V, 50 Hz (w zależności od modelu)
- asynchroniczny, trójfazowy, 230/400 V, 50 Hz
- stopień ochrony IP55
- klasa izolacji F
- do regulacji częstotliwościowej (silniki trójfazowe) lub regulacji napięciowej (silniki jednofazowe)

WYKONANIA SPECJALNE

- dowolna figura LG/RD
- wersja ATEX - patrz wentylatory przeciwwybuchowe
- obudowa wykonana z: PPs-el, PE, PVC, PVDF
- wirnik wykonany z: PPs-el, PVDF
- napęd pasowy

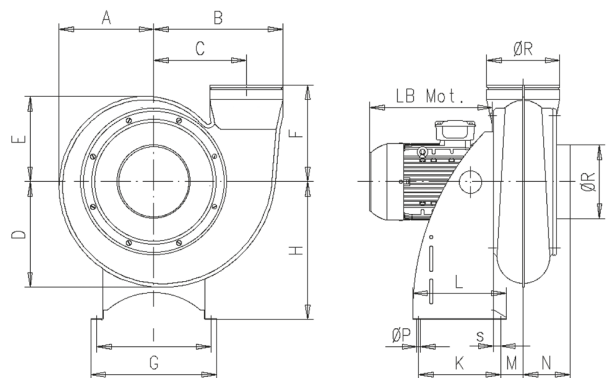


Termicznie formowana obudowa
Szeroka gama materiału wykonania obudowy wentylatora: PPs, PPs-el, PE, PVC, PVDF.



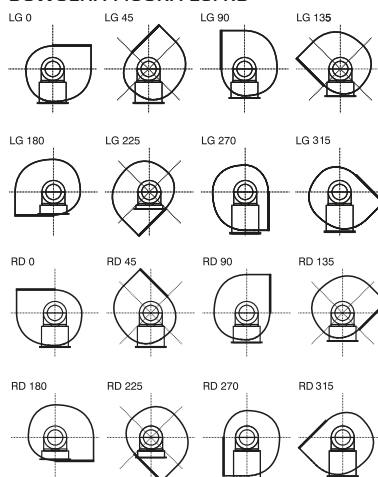
Wirnik wyważony dynamicznie
Wirnik z łopatkami pochylonymi do przodu, formowany wtryskowo, wyważony dynamicznie zgodnie z ISO 1940.

WYMIARY [mm]



| CMV | 125 | 160 | 200 | 250 | 315 | 400 |
|-----|-----|-----|-----|-----|-----|-----|
| A | 188 | 226 | 275 | 336 | 415 | 452 |
| B | 227 | 286 | 355 | 441 | 554 | 641 |
| C | 164 | 206 | 255 | 316 | 396 | 441 |
| D | 206 | 252 | 310 | 380 | 471 | 527 |
| E | 170 | 200 | 241 | 293 | 359 | 378 |
| F | 200 | 225 | 275 | 330 | 400 | 425 |
| G | 270 | 290 | 380 | 430 | 480 | 580 |
| H | 250 | 310 | 380 | 470 | 580 | 670 |
| I | 240 | 260 | 350 | 390 | 440 | 540 |
| K | 220 | 220 | 260 | 275 | 325 | 360 |
| L | 250 | 250 | 290 | 315 | 365 | 400 |
| M | 35 | 47 | 64 | 78 | 102 | 133 |
| N | 110 | 120 | 140 | 160 | 190 | 220 |
| ØP | 10 | 10 | 10 | 10 | 10 | 10 |
| ØR | 125 | 160 | 200 | 250 | 315 | 400 |
| S | 15 | 15 | 15 | 20 | 20 | 20 |

DOWOLNA FIGURA LG/RD



Wentylator chemoodporny

CMVeco

DANE TECHNICZNE

| Typ | wydajność max | ciśnienie max | moc silnika | prędkość obrotowa | natężenie | napięcie | poziom ciśnienia akust.* | masa | regulator** | nr artykułu |
|--------------------------|---------------|---------------|-------------|-------------------|-----------|----------|--------------------------|------|-----------------|-------------|
| | [m³/h] | [Pa] | [kW] | [obr/min] | [A] | [V] | [dB(A)] | [kg] | | |
| JEDNOFAZOWE | | | | | | | | | | |
| CMVeco-2-125/125-037S RU | 590 | 660 | 0,37 | 2800 | 2,5 | 230 | 46 | 14 | REB 5 / RVS 3 | 44112865 |
| CMVeco-4-125/125-025S RU | 295 | 145 | 0,25 | 1400 | 2,4 | 230 | 31 | 13 | REB 5 / RVS 3 | 44112845 |
| CMVeco-6-125/125-018S RU | 200 | 47 | 0,18 | 900 | 1,6 | 230 | 21 | 10 | TLR 25 / RVS 3 | 44112825 |
| CMVeco-2-160/160-055S RU | 1305 | 950 | 0,55 | 2800 | 3,6 | 230 | 54 | 17 | REB 5 / RVS 5 | 44112965 |
| CMVeco-4-160/160-025S RU | 650 | 230 | 0,25 | 1400 | 2,4 | 230 | 39 | 15 | REB 5 / RVS 3 | 44112945 |
| CMVeco-6-160/160-018S RU | 440 | 95 | 0,18 | 900 | 1,6 | 230 | 30 | 12 | TLR 25 / RVS 3 | 44112925 |
| CMVeco-2-200/180-110S RU | 2000 | 1060 | 1,1 | 2800 | 6,9 | 230 | 57 | 25 | REB 10 / RVS 7 | 44112165 |
| CMVeco-4-200/180-025S RU | 1000 | 250 | 0,25 | 1400 | 2,4 | 230 | 42 | 21 | REB 5 / RVS 3 | 44112145 |
| CMVeco-6-200/180-018S RU | 670 | 100 | 0,18 | 900 | 1,6 | 230 | 33 | 18 | TLR 25 / RVS 3 | 44112125 |
| CMVeco-4-200/200-037S RU | 1090 | 400 | 0,37 | 1400 | 3,2 | 230 | 45 | 21 | REB 5 / RVS 5 | 44112245 |
| CMVeco-6-200/200-018S RU | 1000 | 180 | 0,18 | 900 | 1,6 | 230 | 36 | 18 | TLR 25 / RVS 3 | 44112225 |
| CMVeco-4-250/225-055S RU | 2505 | 505 | 0,55 | 1400 | 3,9 | 230 | 48 | 37 | REB 5 / RVS 5 | 44112345 |
| CMVeco-6-250/225-037S RU | 1585 | 230 | 0,37 | 900 | 2,9 | 230 | 39 | 27 | REB 5 / RVS 5 | 44112325 |
| CMVeco-4-250/250-075S RU | 3010 | 685 | 0,75 | 1400 | 5 | 230 | 52 | 31 | REB 10 / RVS 7 | 44112445 |
| CMVeco-6-250/250-037S RU | 2015 | 310 | 0,37 | 900 | 2,9 | 230 | 43 | 27 | REB 5 / RVS 5 | 44112425 |
| CMVeco-4-315/280-110S RU | 5160 | 820 | 1,1 | 1400 | 7,75 | 230 | 54 | 51 | REB 10 / RVS 10 | 44112545 |
| CMVeco-6-315/280-055S RU | 3455 | 365 | 0,55 | 900 | 3,8 | 230 | 45 | 45 | REB 5 / RVS 5 | 44112525 |
| CMVeco-6-315/315-055S RU | 4360 | 465 | 0,55 | 900 | 3,8 | 230 | 50 | 46 | REB 5 / RVS 5 | 44112625 |
| TRÓJFAZOWE | | | | | | | | | | |
| CMVeco-2-125/125-037T | 590 | 660 | 0,37 | 2800 | 1 | 400Y | 46 | 14 | Falownik 0,4kW | 44112855 |
| CMVeco-4-125/125-025T | 295 | 145 | 0,25 | 1400 | 0,85 | 400Y | 31 | 13 | Falownik 0,4kW | 44112835 |
| CMVeco-6-125/125-018T | 200 | 47 | 0,18 | 900 | 0,75 | 400Y | 21 | 10 | Falownik 0,4kW | 44112815 |
| CMVeco-2-160/160-055T | 1305 | 950 | 0,55 | 2800 | 1,35 | 400Y | 54 | 17 | Falownik 0,75kW | 44112955 |
| CMVeco-4-160/160-025T | 650 | 230 | 0,25 | 1400 | 0,85 | 400Y | 39 | 15 | Falownik 0,4kW | 44112935 |
| CMVeco-6-160/160-018T | 440 | 95 | 0,18 | 900 | 0,75 | 400Y | 30 | 12 | Falownik 0,4kW | 44112915 |
| CMVeco-2-200/180-110T | 2000 | 1060 | 1,1 | 2800 | 2,2 | 400Y | 57 | 25 | Falownik 1,5kW | 434112155 |
| CMVeco-4-200/180-025T | 1000 | 250 | 0,25 | 1400 | 0,85 | 400Y | 42 | 21 | Falownik 0,4kW | 44112135 |
| CMVeco-6-200/180-018T | 670 | 100 | 0,18 | 900 | 0,75 | 400Y | 33 | 18 | Falownik 0,4kW | 44112115 |
| CMVeco-2-200/200-220T | 3255 | 1610 | 2,2 | 2800 | 4,3 | 400Y | 60 | 38 | Falownik 2,2kW | 434112251 |
| CMVeco-4-200/200-055T | 1625 | 400 | 0,55 | 1400 | 1,6 | 400Y | 45 | 21 | Falownik 0,75kW | 44112237 |
| CMVeco-6-200/200-018T | 1090 | 180 | 0,18 | 900 | 0,75 | 400Y | 36 | 18 | Falownik 0,4kW | 44112215 |
| CMVeco-2-250/225-400T | 5020 | 2025 | 4 | 2800 | 7,4 | 400Y | 63 | 60 | Falownik 4,0kW | 434112365 |
| CMVeco-4-250/225-110T | 2505 | 505 | 1,1 | 1400 | 2,5 | 400Y | 48 | 37 | Falownik 1,5kW | 434112337 |
| CMVeco-6-250/225-037T | 1685 | 230 | 0,37 | 900 | 1,4 | 400Y | 39 | 27 | Falownik 0,4kW | 44112315 |
| CMVeco-2-250/250-400T | 5310 | 2750 | 4 | 2800 | 7,4 | 400Y | 67 | 61 | Falownik 4,0kW | 434112455 |
| CMVeco-4-250/250-075T | 3010 | 685 | 0,75 | 1400 | 2,1 | 400Y | 52 | 31 | Falownik 0,75kW | 434112435 |
| CMVeco-6-250/250-037T | 2015 | 310 | 0,37 | 900 | 1,4 | 400Y | 43 | 27 | Falownik 0,4kW | 44112415 |
| CMVeco-4-315/280-150T | 5160 | 820 | 1,5 | 1400 | 3,3 | 400Y | 54 | 51 | Falownik 1,5kW | 434112535 |
| CMVeco-6-315/280-075T | 3455 | 365 | 0,75 | 900 | 1,9 | 400Y | 45 | 45 | Falownik 0,75kW | 434112515 |
| CMVeco-4-315/315-220T | 6500 | 1035 | 2,2 | 1400 | 4,6 | 400Y | 59 | 57 | Falownik 2,2kW | 434112635 |
| CMVeco-6-315/315-075T | 4360 | 465 | 0,75 | 900 | 1,9 | 400Y | 50 | 46 | Falownik 0,75kW | 434112615 |
| CMVeco-4-400/400-400T | 10960 | 1090 | 4 | 1400 | 8,1 | 400Y | 62 | 82 | Falownik 4,0kW | 434112735 |
| CMVeco-6-400/400-110T | 7350 | 490 | 1,1 | 900 | 2,8 | 400Y | 53 | 63 | Falownik 1,5kW | 434112715 |

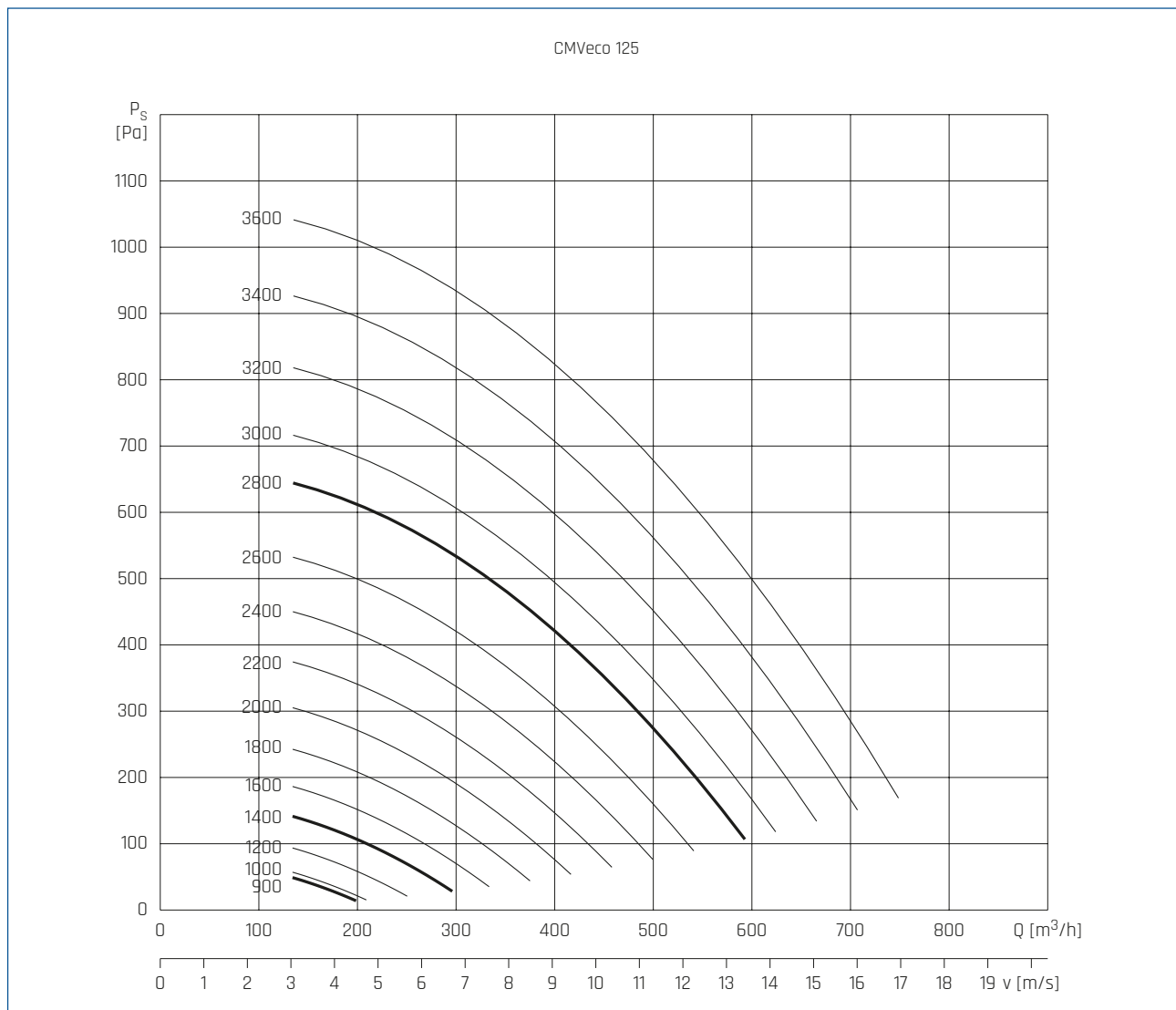
* poziom ciśnienia akustycznego mierzony w odległości 3m dla 2/3 wydajności maksymalnej.

** regulatory nie są sprzedawane w komplecie z wentylatorem. Wentylatory przy których nie zaznaczono regulatora nie są przystosowane do regulacji prędkości obrotowej.

Wentylator chemoodporny

CMVeco

CHARAKTERYSTYKI PRACY

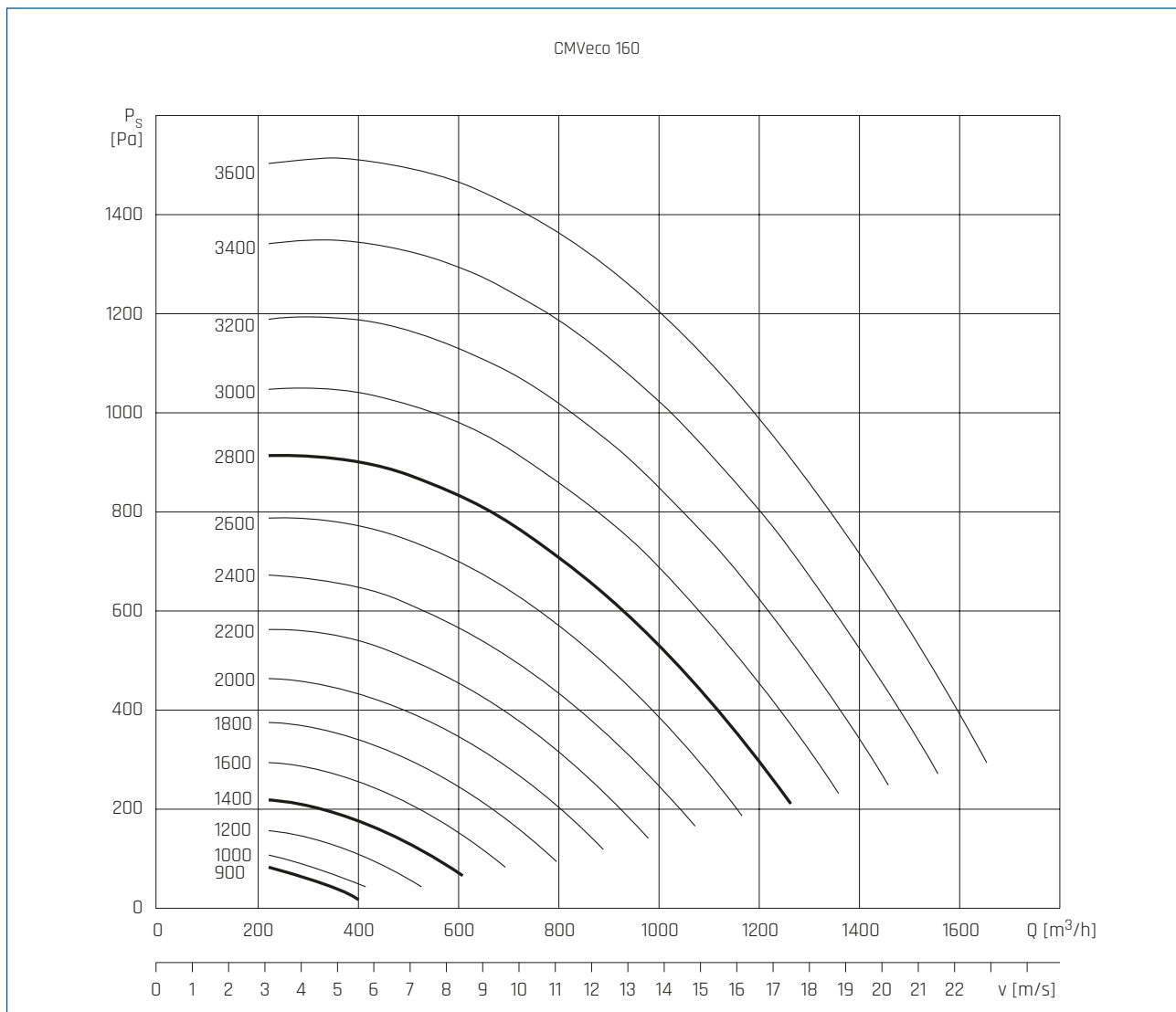


| n [obr/min] | L_{WA} [dB(A)] | Hz | | | | | | | |
|----------------|---------------------|----|-----|-----|-----|------|------|------|------|
| | | 63 | 125 | 250 | 500 | 1000 | 2000 | 4000 | 8000 |
| 1600 | 50 | 4 | 20 | 33 | 40 | 46 | 45 | 40 | 29 |
| 1800 | 53 | 7 | 23 | 36 | 43 | 49 | 48 | 43 | 32 |
| 2000 | 55 | 9 | 25 | y | 45 | 51 | 50 | 45 | 34 |
| 2200 | 57 | 11 | 27 | 40 | 47 | 53 | 52 | 47 | 36 |
| 2400 | 59 | 13 | 29 | 42 | 49 | 55 | 54 | 49 | 38 |
| 2600 | 61 | 15 | 31 | 44 | 51 | 57 | 56 | 51 | 40 |
| 2800 | 63 | 17 | 33 | 46 | 53 | 59 | 58 | 53 | 42 |
| 3000 | 64 | 18 | 34 | 47 | 54 | 60 | 59 | 54 | 43 |
| 3200 | 65 | 19 | 35 | 48 | 55 | 61 | 60 | 55 | 44 |
| 3400 | 67 | 21 | 37 | 50 | 57 | 63 | 62 | 57 | 46 |
| 3600 | 68 | 22 | 38 | 51 | 58 | 64 | 63 | 58 | 47 |

Wentylator chemooodporny

CMVeco

CHARAKTERYSTYKI PRACY

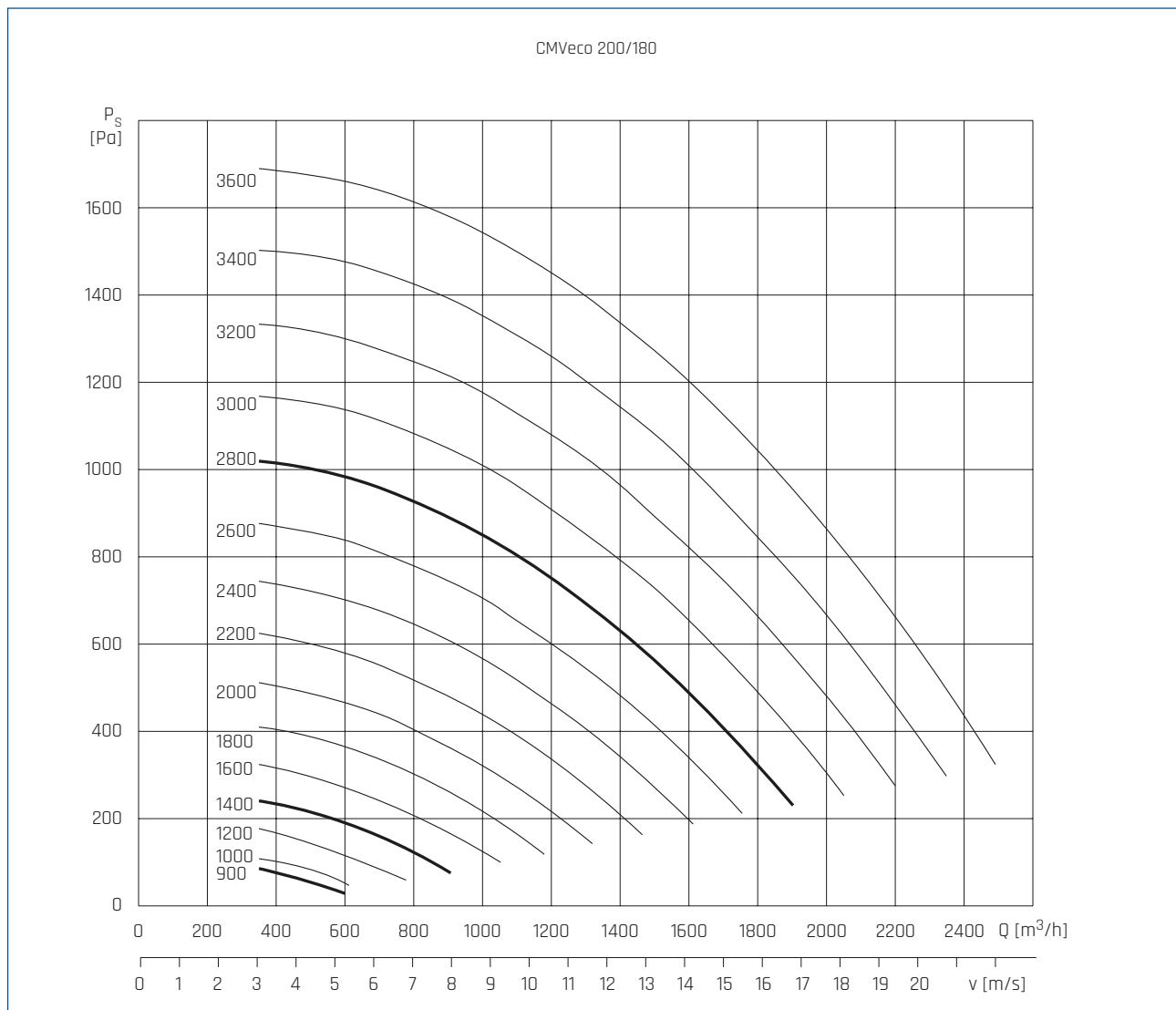


| n [obr./min] | L_{WA} [dB(A)] | Hz | | | | | | | |
|-----------------|---------------------|----|-----|-----|-----|------|------|------|------|
| | | 63 | 125 | 250 | 500 | 1000 | 2000 | 4000 | 8000 |
| 1600 | 58 | 12 | 28 | 41 | 47 | 54 | 53 | 47 | 36 |
| 1800 | 61 | 15 | 31 | 44 | 50 | 57 | 56 | 50 | 39 |
| 2000 | 63 | 17 | 33 | 46 | 52 | 59 | 58 | 52 | 41 |
| 2200 | 65 | 19 | 35 | 48 | 54 | 61 | 60 | 54 | 43 |
| 2400 | 67 | 21 | 37 | 50 | 56 | 63 | 62 | 56 | 45 |
| 2600 | 69 | 23 | 39 | 52 | 58 | 65 | 64 | 58 | 47 |
| 2800 | 71 | 25 | 41 | 54 | 60 | 67 | 66 | 60 | 49 |
| 3000 | 72 | 26 | 42 | 55 | 61 | 68 | 67 | 61 | 50 |
| 3200 | 73 | 27 | 43 | 56 | 62 | 69 | 68 | 62 | 51 |
| 3400 | 75 | 29 | 45 | 58 | 64 | 71 | 70 | 64 | 53 |
| 3600 | 76 | 30 | 46 | 59 | 65 | 72 | 71 | 65 | 54 |

Wentylator chemoodporny

CMVeco

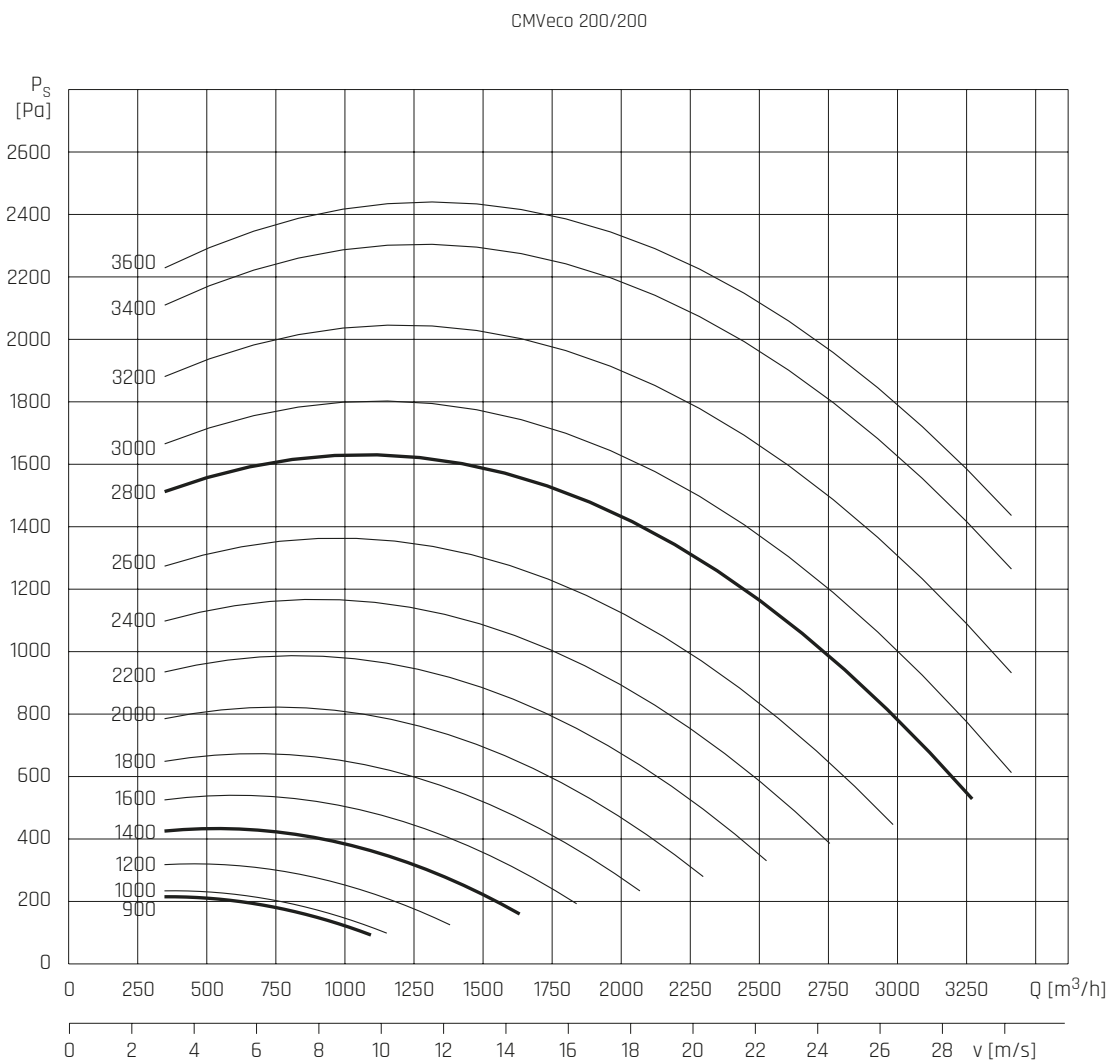
CHARAKTERYSTYKI PRACY



| n [obr/min] | L_{WA} [dB(A)] | Hz | | | | | | | |
|----------------|---------------------|----|-----|-----|-----|------|------|------|------|
| | | 63 | 125 | 250 | 500 | 1000 | 2000 | 4000 | 8000 |
| 1600 | 61 | 15 | 31 | 43 | 50 | 57 | 56 | 50 | 39 |
| 1800 | 64 | 18 | 34 | 46 | 53 | 60 | 59 | 53 | 42 |
| 2000 | 66 | 20 | 36 | 48 | 55 | 62 | 61 | 55 | 44 |
| 2200 | 68 | 22 | 38 | 50 | 57 | 64 | 63 | 57 | 46 |
| 2400 | 70 | 24 | 40 | 52 | 59 | 66 | 65 | 59 | 48 |
| 2600 | 72 | 26 | 42 | 54 | 61 | 68 | 67 | 61 | 50 |
| 2800 | 74 | 28 | 44 | 56 | 63 | 70 | 69 | 63 | 52 |
| 3000 | 75 | 29 | 45 | 57 | 64 | 71 | 70 | 64 | 53 |
| 3200 | 76 | 30 | 46 | 58 | 65 | 72 | 71 | 65 | 54 |
| 3400 | 78 | 32 | 48 | 60 | 67 | 74 | 73 | 67 | 56 |
| 3600 | 79 | 33 | 49 | 61 | 68 | 75 | 74 | 68 | 57 |

Wentylator chemoodporny **CMVeco**

CHARAKTERYSTYKI PRACY

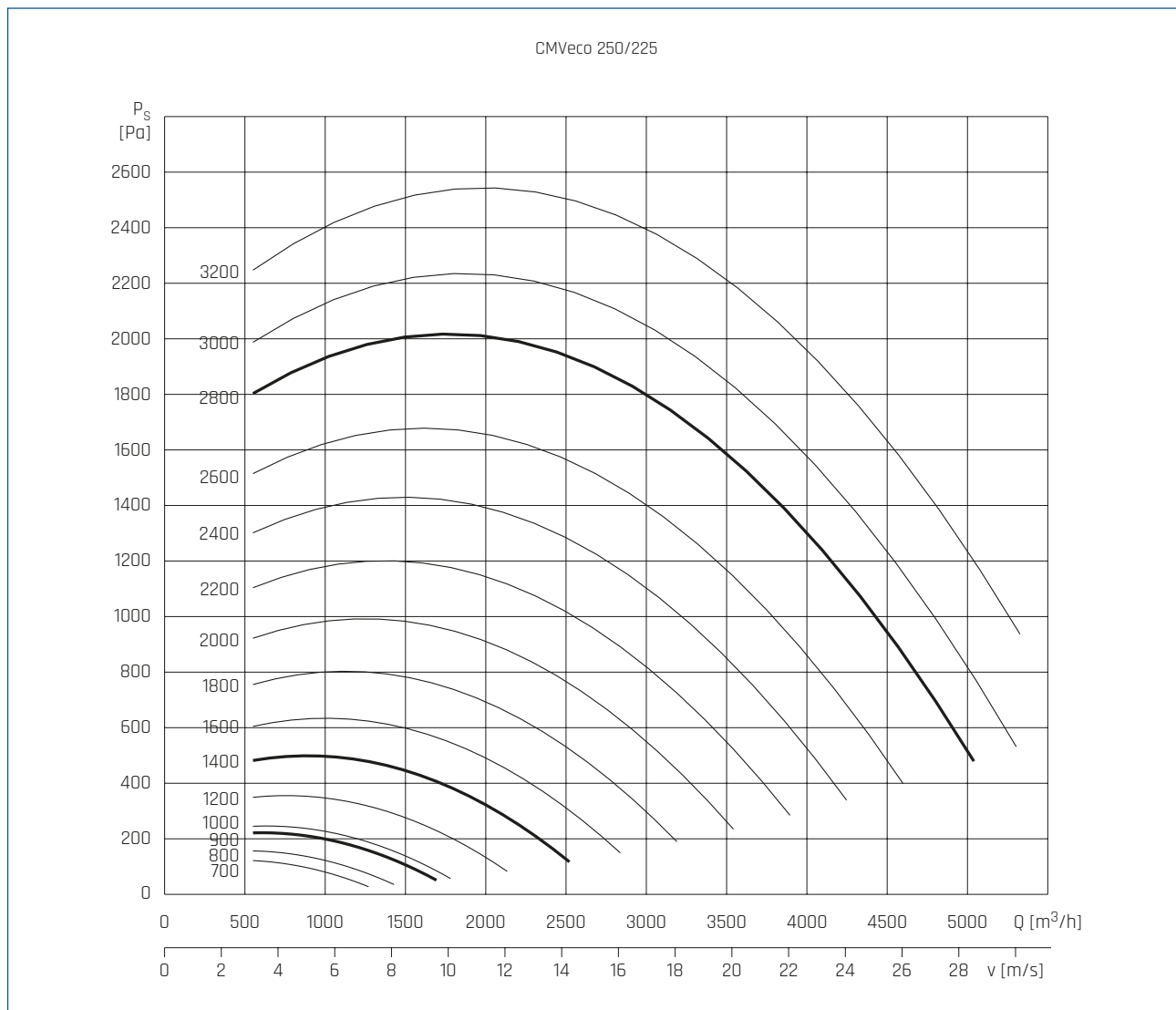


| n [obr/min] | L _{WA} [dB(A)] | Hz | | | | | | | |
|----------------|----------------------------|----|-----|-----|-----|------|------|------|------|
| | | 63 | 125 | 250 | 500 | 1000 | 2000 | 4000 | 8000 |
| 1600 | 64 | 20 | 37 | 46 | 51 | 60 | 61 | 51 | 39 |
| 1800 | 67 | 23 | 40 | 49 | 54 | 63 | 64 | 54 | 42 |
| 2000 | 69 | 25 | 42 | 51 | 56 | 65 | 66 | 56 | 44 |
| 2200 | 71 | 27 | 44 | 53 | 58 | 67 | 68 | 58 | 46 |
| 2400 | 73 | 29 | 46 | 55 | 60 | 69 | 70 | 60 | 48 |
| 2600 | 75 | 31 | 48 | 57 | 62 | 71 | 72 | 62 | 50 |
| 2800 | 77 | 33 | 50 | 59 | 64 | 73 | 74 | 64 | 52 |
| 3000 | 78 | 34 | 51 | 60 | 65 | 74 | 75 | 65 | 53 |
| 3200 | 79 | 35 | 52 | 61 | 66 | 75 | 76 | 66 | 54 |
| 3400 | 81 | 37 | 54 | 63 | 68 | 77 | 78 | 68 | 56 |
| 3500 | 81 | 37 | 54 | 63 | 68 | 77 | 78 | 68 | 56 |

Wentylator chemoodporny

CMVeco

CHARAKTERYSTYKI PRACY

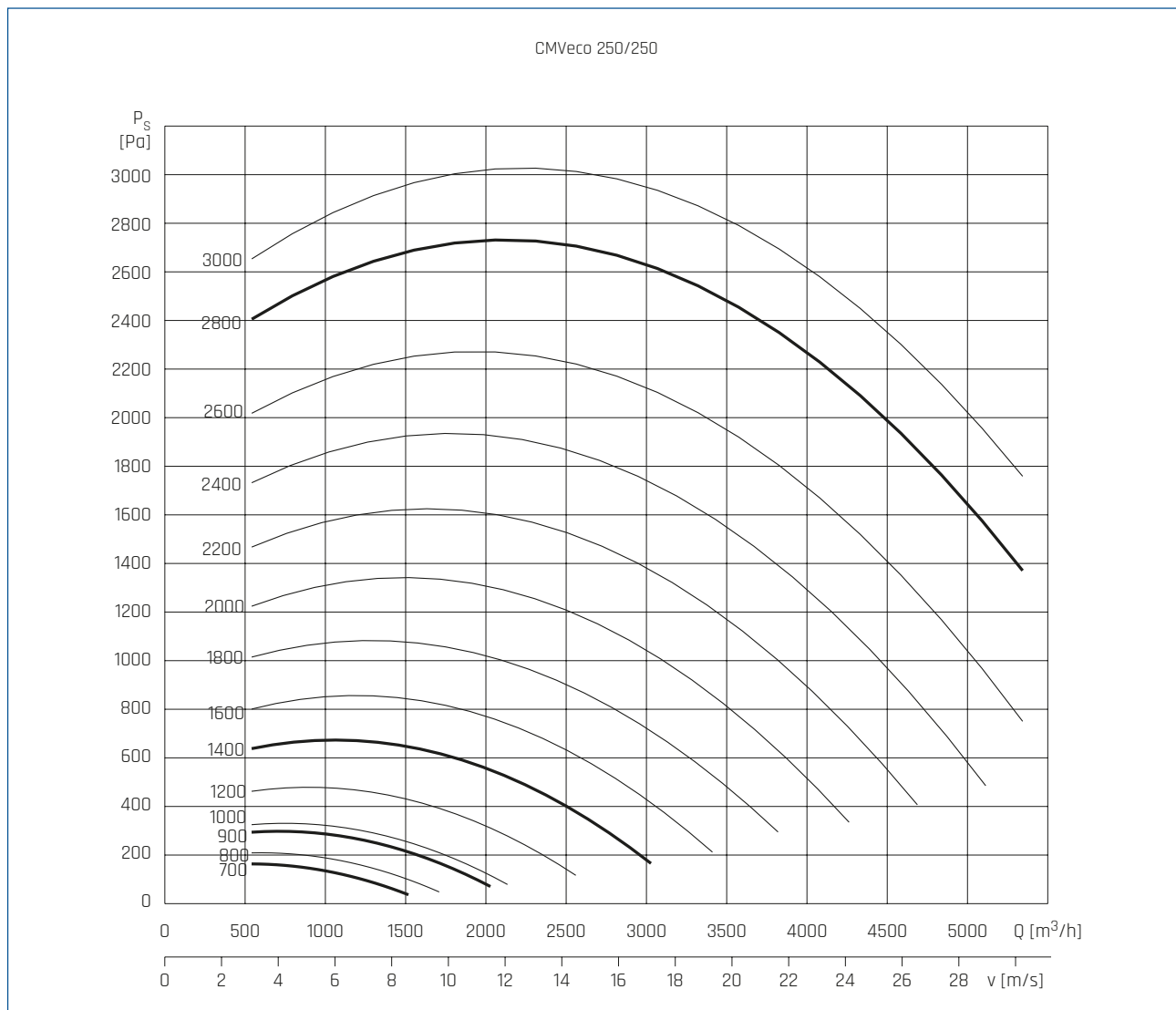


| n [obr/min] | L_{WA} [dB(A)] | Hz | | | | | | | |
|----------------|---------------------|----|-----|-----|-----|------|------|------|------|
| | | 63 | 125 | 250 | 500 | 1000 | 2000 | 4000 | 8000 |
| 1200 | 62 | 23 | 38 | 47 | 51 | 58 | 58 | 49 | 37 |
| 1400 | 65 | 26 | 41 | 50 | 54 | 61 | 61 | 52 | 40 |
| 1600 | 67 | 28 | 43 | 52 | 56 | 63 | 63 | 54 | 42 |
| 1800 | 70 | 31 | 46 | 55 | 59 | 66 | 66 | 57 | 45 |
| 2000 | 72 | 33 | 48 | 57 | 61 | 68 | 68 | 59 | 47 |
| 2200 | 74 | 35 | 50 | 59 | 63 | 70 | 70 | 61 | 49 |
| 2400 | 76 | 37 | 52 | 61 | 65 | 72 | 72 | 63 | 51 |
| 2600 | 78 | 39 | 54 | 63 | 67 | 74 | 74 | 65 | 53 |
| 2800 | 80 | 41 | 56 | 65 | 69 | 76 | 76 | 67 | 55 |
| 3000 | 81 | 42 | 57 | 66 | 70 | 77 | 77 | 68 | 56 |
| 3200 | 82 | 43 | 58 | 67 | 71 | 78 | 78 | 69 | 57 |

Wentylator chemoodporny

CMVeco

CHARAKTERYSTYKI PRACY

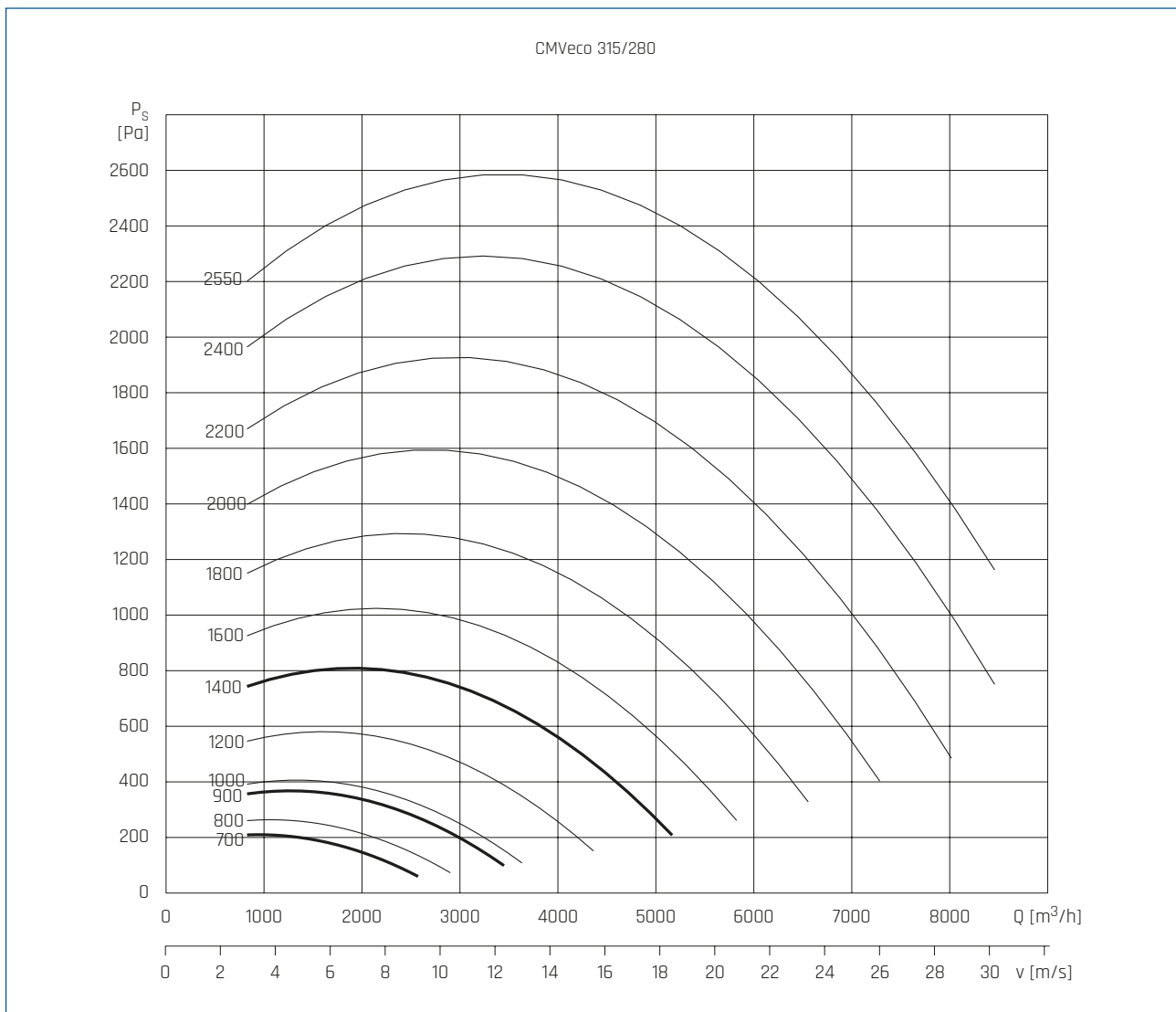


| n [obr/min] | L_{WA} [dB(A)] | Hz | | | | | | | |
|----------------|---------------------|----|-----|-----|-----|------|------|------|------|
| | | 63 | 125 | 250 | 500 | 1000 | 2000 | 4000 | 8000 |
| 1000 | 62 | 26 | 41 | 49 | 52 | 58 | 57 | 49 | 37 |
| 1200 | 66 | 30 | 45 | 53 | 56 | 62 | 61 | 53 | 41 |
| 1400 | 69 | 33 | 48 | 56 | 59 | 65 | 64 | 56 | 44 |
| 1600 | 71 | 35 | 50 | 58 | 61 | 67 | 66 | 58 | 46 |
| 1800 | 74 | 38 | 53 | 61 | 64 | 70 | 69 | 61 | 49 |
| 2000 | 76 | 40 | 55 | 63 | 66 | 72 | 71 | 63 | 51 |
| 2200 | 78 | 42 | 57 | 65 | 68 | 74 | 73 | 65 | 53 |
| 2400 | 80 | 44 | 59 | 67 | 70 | 76 | 75 | 67 | 55 |
| 2600 | 82 | 46 | 61 | 69 | 72 | 78 | 77 | 69 | 57 |
| 2800 | 84 | 48 | 63 | 71 | 74 | 80 | 79 | 71 | 59 |
| 2850 | 84 | 48 | 63 | 71 | 74 | 80 | 79 | 71 | 59 |

Wentylator chemoodporny

CMVeco

CHARAKTERYSTYKI PRACY

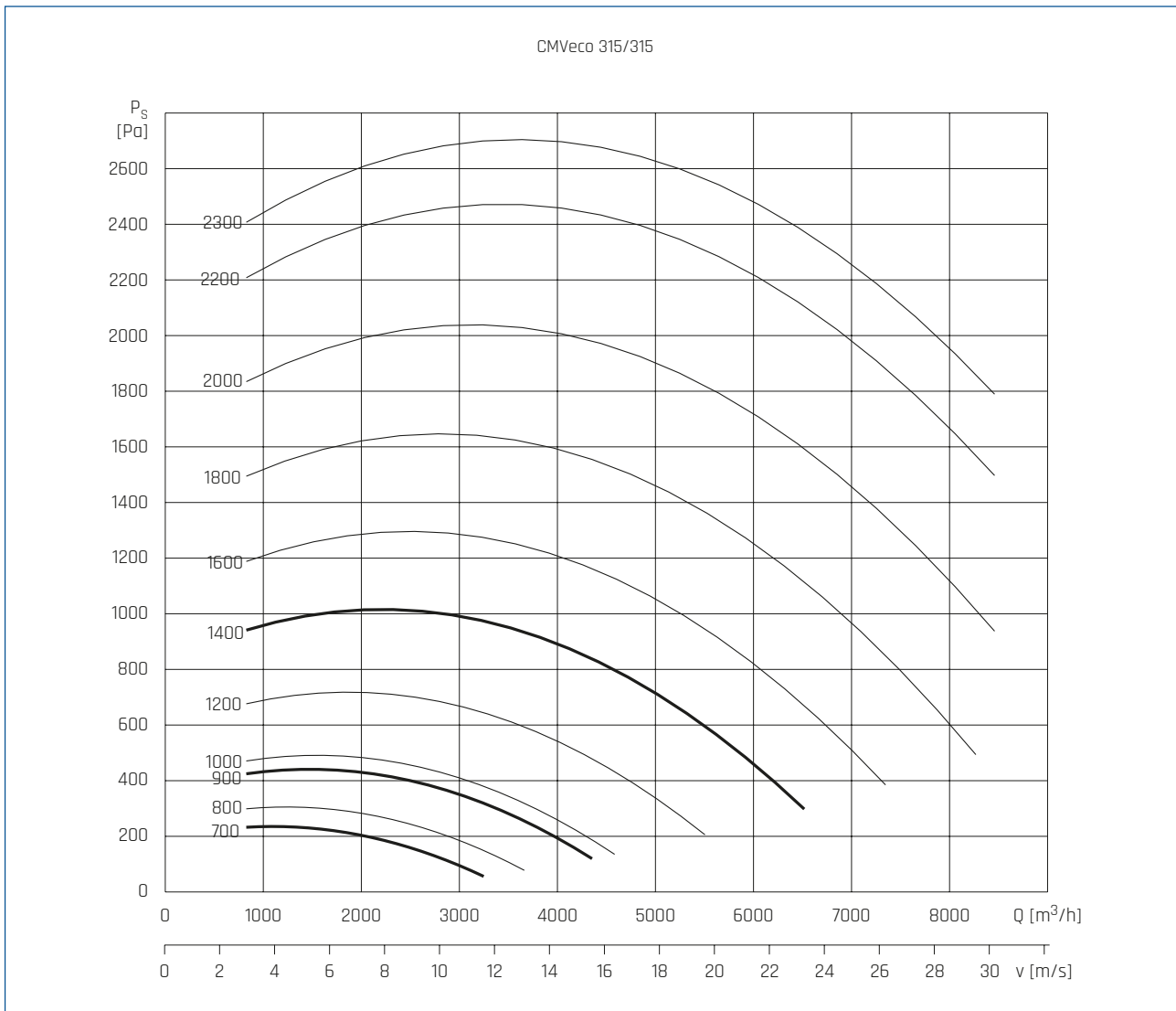


| n [obr/min] | L_{WA} [dB(A)] | Hz | | | | | | | |
|----------------|---------------------|----|-----|-----|-----|------|------|------|------|
| | | 63 | 125 | 250 | 500 | 1000 | 2000 | 4000 | 8000 |
| 800 | 59 | 28 | 40 | 49 | 51 | 55 | 53 | 46 | 35 |
| 900 | 62 | 31 | 43 | 52 | 54 | 58 | 56 | 49 | 38 |
| 1000 | 64 | 33 | 45 | 54 | 56 | 60 | 58 | 51 | 40 |
| 1200 | 68 | 37 | 49 | 58 | 60 | 64 | 62 | 55 | 44 |
| 1400 | 71 | 40 | 52 | 61 | 63 | 67 | 65 | 58 | 47 |
| 1600 | 73 | 42 | 54 | 63 | 65 | 69 | 67 | 60 | 49 |
| 1800 | 76 | 45 | 57 | 66 | 68 | 72 | 70 | 63 | 52 |
| 2000 | 78 | 47 | 59 | 68 | 70 | 74 | 72 | 65 | 54 |
| 2200 | 80 | 49 | 61 | 70 | 72 | 76 | 74 | 67 | 56 |
| 2400 | 82 | 51 | 63 | 72 | 74 | 78 | 76 | 69 | 58 |
| 2550 | 84 | 53 | 65 | 74 | 76 | 80 | 78 | 71 | 60 |

Wentylator chemoodporny

CMVeco

CHARAKTERYSTYKI PRACY

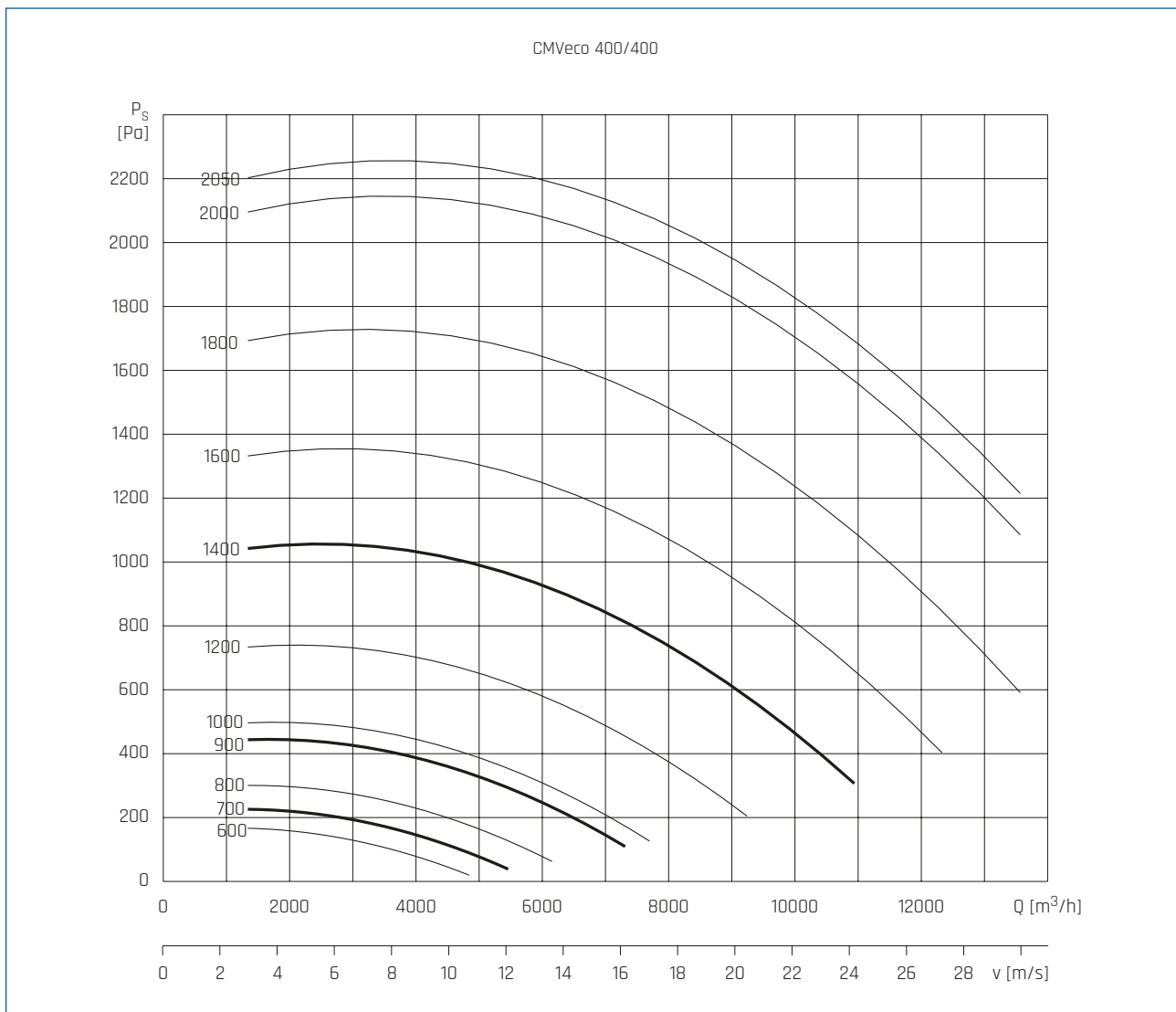


| n [obr/min] | L_{WA} [dB(A)] | Hz | | | | | | | |
|----------------|---------------------|----|-----|-----|-----|------|------|------|------|
| | | 63 | 125 | 250 | 500 | 1000 | 2000 | 4000 | 8000 |
| 800 | 64 | 37 | 48 | 57 | 57 | 59 | 56 | 50 | 40 |
| 900 | 67 | 40 | 51 | 60 | 60 | 62 | 59 | 53 | 43 |
| 1000 | 69 | 42 | 53 | 62 | 62 | 64 | 61 | 55 | 45 |
| 1200 | 73 | 46 | 57 | 66 | 66 | 68 | 65 | 59 | 49 |
| 1400 | 76 | 49 | 60 | 69 | 69 | 71 | 68 | 62 | 52 |
| 1600 | 78 | 51 | 62 | 71 | 71 | 73 | 70 | 64 | 54 |
| 1800 | 81 | 54 | 65 | 74 | 74 | 76 | 73 | 67 | 57 |
| 2000 | 83 | 56 | 67 | 76 | 76 | 78 | 75 | 69 | 59 |
| 2200 | 85 | 58 | 69 | 78 | 78 | 80 | 77 | 71 | 61 |
| 2300 | 86 | 59 | 70 | 79 | 79 | 81 | 78 | 72 | 62 |

Wentylator chemoodporny

CMVeco

CHARAKTERYSTYKI PRACY

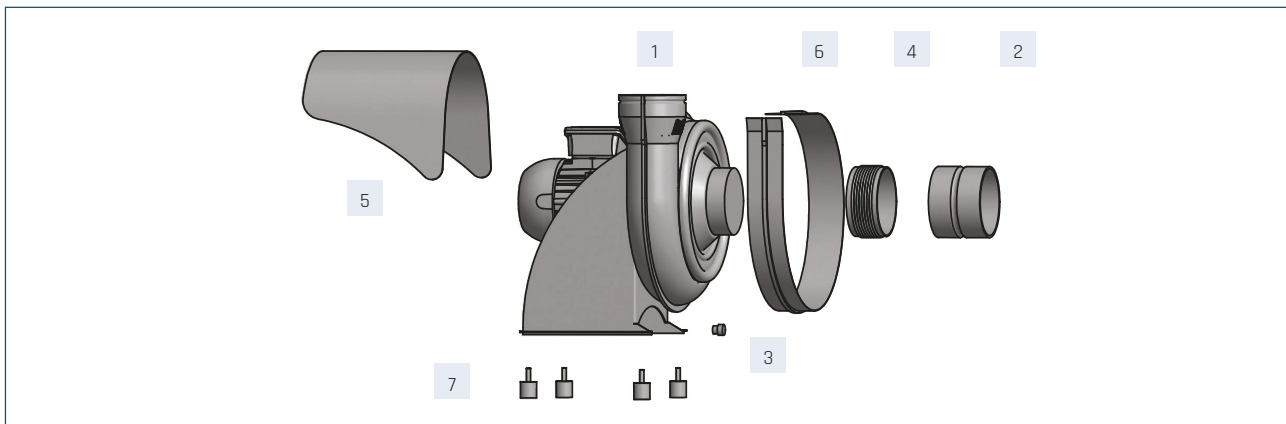


| n [obr/min] | L_{WA} [dB(A)] | Hz | | | | | | | |
|----------------|---------------------|----|-----|-----|-----|------|------|------|------|
| | | 63 | 125 | 250 | 500 | 1000 | 2000 | 4000 | 8000 |
| 700 | 64 | 30 | 44 | 53 | 57 | 61 | 55 | 48 | 39 |
| 800 | 67 | 33 | 47 | 56 | 60 | 64 | 58 | 51 | 42 |
| 900 | 70 | 36 | 50 | 59 | 63 | 67 | 61 | 54 | 45 |
| 1000 | 72 | 38 | 52 | 61 | 65 | 69 | 63 | 56 | 47 |
| 1200 | 76 | 42 | 56 | 65 | 69 | 73 | 67 | 60 | 51 |
| 1400 | 79 | 45 | 59 | 68 | 72 | 76 | 70 | 63 | 54 |
| 1600 | 81 | 47 | 61 | 70 | 74 | 78 | 72 | 65 | 56 |
| 1800 | 84 | 50 | 64 | 73 | 77 | 81 | 75 | 68 | 59 |
| 2000 | 86 | 52 | 66 | 75 | 79 | 83 | 77 | 70 | 61 |
| 2050 | 87 | 53 | 67 | 76 | 80 | 84 | 78 | 71 | 62 |

Wentylator chemooodporny

CMVeco

AKCESORIA MONTAŻOWE



| 1 Wentylator | 2 Kłapa zwrotna | 3 Drenaż | | 4 Złącze przeciwdrganiowe | | 5 Osłona silnika | 6 Osłona przeci-wodfalkowa | 7 Wibroizolator | 8 Wibroizolator sufitowy |
|-----------------|--------------------|-------------|-----------|------------------------------|---------------|---------------------|-------------------------------|--------------------|-----------------------------|
| | | z zakrętką | z króćcem | standard | ATEX 1 | | | | |
| CMVeco 125, PPs | KZ CMVeco 125 | | | ZP PVC 125 | ZP PVC-EL 125 | OS CMVeco 125 | OP CMVeco 125 | WP 125-200 | WS 125-200 |
| CMVeco 160, PPs | KZ CMVeco 160 | D-K PE | D-V PE | ZP PVC 160 | ZP PVC-EL 160 | OS CMVeco 160 | OP CMVeco 160 | WP 125-200 | WS 125-200 |
| CMVeco 200, PPs | KZ CMVeco 200 | D-K PP | D-V PP | ZP PVC 200 | ZP PVC-EL 200 | OS CMVeco 200 | OP CMVeco 200 | WP 125-200 | WS 125-200 |
| CMVeco 250, PPs | KZ CMVeco 250 | D-K PVC | D-V PVC | ZP PVC 250 | ZP PVC-EL 250 | OS CMVeco 250 | OP CMVeco 250 | WP 225-400 | WS 225-400 |
| CMVeco 315, PPs | KZ CMVeco 315 | D-K PVDF | D-V PVDF | ZP PVC 315 | ZP PVC-EL 315 | OS CMVeco 250 | OP CMVeco 315 | WP 225-400 | WS 225-400 |
| CMVeco 400, PPs | KZ CMVeco 400 | | | ZP PVC 400 | ZP PVC-EL 400 | OS CMVeco 315 | OP CMVeco 400 | WP 225-400 | WS 225-400 |

Numery artykułów

| | | | | | | | |
|---------------|----------|----------------------|-------------|----------------------|-------------|----------------------|-------------|
| D-K PE | 44025510 | KZ CMVECO 160 | 44025521 | ZP PVC 200 | 44025564-10 | OS CMVeco 160 | 44025582 |
| D-V PE | 44025511 | KZ CMVECO 200 | 44025522 | ZP PVC-EL 200 | 44025564-20 | OS CMVeco 200 | 44025583 |
| D-K PP | 44025512 | KZ CMVECO 250 | 44025523 | ZP PVC 250 | 44025566-10 | OS CMVeco 250 | 44025584 |
| D-V PP | 44025513 | KZ CMVECO 315 | 44025524 | ZP PVC-EL 250 | 44025566-20 | OS CMVeco 315 | 44025584 |
| D-K PVC | 44025514 | KZ CMVECO 400 | 44025525 | ZP PVC 315 | 44025567-10 | OS CMVeco 400 | 44025585 |
| D-V PVC | 44025515 | ZP PVC 125 | 44025562-10 | ZP PVC-EL 315 | 44025567-20 | WP 125-200 | 44025751-10 |
| D-K PVDF | 44025516 | ZP PVC-EL 125 | 44025562-20 | ZP PVC 400 | 44025568-10 | WP 225-400 | 44025751-11 |
| D-V PVDF | 44025517 | ZP PVC 160 | 44025563-10 | ZP PVC-EL 400 | 44025568 | WS 125-200 | 44025751-20 |
| KZ CMVECO 125 | 44025520 | ZP PVC-EL 160 | 44025563 | OS CMVeco 125 | 44025581 | WS 225-400 | 44025751-21 |



Wentylator chemoodporny

CMVeco

AKCESORIA ELEKTRYCZNE

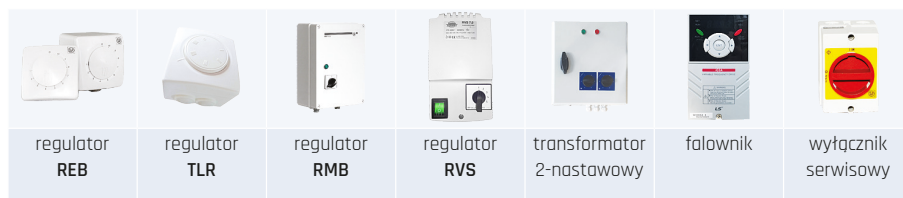
| Typ | regulator tyrystorowy | | | regulator transformatorowy | | regulator transformatorowy 2-nastawowy | | falownik | wyłącznik serwisowy |
|--------------------------|-----------------------|------------|-----------|----------------------------|--------|--|--------------|----------|---------------------|
| | REB N | REB NE | TLR | RMB | RVS | SC2 | SC2A | | |
| CMVeco-2-125/125-037S RU | REB-5 | REB-5 | - | RMB-3.5 | RVS-3 | SC2-1-35L25 | SC2A1-35L25 | - | L-N 1SP 10A |
| CMVeco-4-125/125-025S RU | REB-5 | REB-5 | - | RMB-3.5 | RVS-3 | SC2-1-35L25 | SC2A1-35L25 | - | L-N 1SP 10A |
| CMVeco-6-125/125-018S RU | REB-2.5 N | REB-2.5 NE | TLR 25 DS | RMB-3.5 | RVS-3 | SC2-1-35L25 | SC2A1-35L25 | - | L-N 1SP 10A |
| CMVeco-2-160/160-055S RU | REB-5 | REB-5 | - | RMB-8 | RVS-5 | SC2-1-50L25 | SC2A1-50L25 | - | L-N 1SP 10A |
| CMVeco-4-160/160-025S RU | REB-5 | REB-5 | - | RMB-3.5 | RVS-3 | SC2-1-35L25 | SC2A1-35L25 | - | L-N 1SP 10A |
| CMVeco-6-160/160-018S RU | REB-2.5 N | REB-2.5 NE | TLR 25 DS | RMB-3.5 | RVS-3 | SC2-1-35L25 | SC2A1-35L25 | - | L-N 1SP 10A |
| CMVeco-2-200/180-110S RU | REB-10 | REB-10 | - | RMB-8 | RVS-7 | SC2-1-75L25 | SC2A1-75L25 | - | L-N 1SP 10A |
| CMVeco-4-200/180-025S RU | REB-5 | REB-5 | - | RMB-3.5 | RVS-3 | SC2-1-35L25 | SC2A1-35L25 | - | L-N 1SP 10A |
| CMVeco-6-200/180-018S RU | REB-2.5 N | REB-2.5 NE | TLR 25 DS | RMB-3.5 | RVS-3 | SC2-1-35L25 | SC2A1-35L25 | - | L-N 1SP 10A |
| CMVeco-4-200/200-037S RU | REB-5 | REB-5 | - | RMB-3.5 | RVS-5 | SC2-1-35L25 | SC2A1-35L25 | - | L-N 1SP 10A |
| CMVeco-6-200/200-018S RU | REB-2.5 N | REB-2.5 NE | TLR 25 DS | RMB-3.5 | RVS-3 | SC2-1-35L25 | SC2A1-35L25 | - | L-N 1SP 10A |
| CMVeco-4-250/225-055S RU | REB-5 | REB-5 | - | RMB-8 | RVS-5 | SC2-1-50L25 | SC2A1-50L25 | - | L-N 1SP 10A |
| CMVeco-6-250/225-037S RU | REB-5 | REB-5 | - | RMB-3.5 | RVS-5 | SC2-1-35L25 | SC2A1-35L25 | - | L-N 1SP 10A |
| CMVeco-4-250/250-075S RU | REB-10 | REB-10 | - | RMB-8 | RVS-7 | SC2-1-75L25 | SC2A1-75L25 | - | L-N 1SP 10A |
| CMVeco-6-250/250-037S RU | REB-5 | REB-5 | - | RMB-3.5 | RVS-5 | SC2-1-35L25 | SC2A1-35L25 | - | L-N 1SP 10A |
| CMVeco-4-315/280-110S RU | REB-10 | REB-10 | - | RMB-8 | RVS-10 | SC2-1-110L25 | SC2A1-110L25 | - | L-N 1SP 10A |
| CMVeco-6-315/280-055S RU | REB-5 | REB-5 | - | RMB-8 | RVS-5 | SC2-1-50L25 | SC2A1-50L25 | - | L-N 1SP 10A |
| CMVeco-6-315/315-055S RU | REB-5 | REB-5 | - | RMB-8 | RVS-5 | SC2-1-50L25 | SC2A1-50L25 | - | L-N 1SP 10A |

| Typ | falownik | wyłącznik serwisowy |
|-----------------------|----------|---------------------|
| CMVeco-2-125/125-037T | L 0.4kW | U1-V1-W1 1SP 10A |
| CMVeco-4-125/125-025T | L 0.4kW | U1-V1-W1 1SP 10A |
| CMVeco-6-125/125-018T | L 0.4kW | U1-V1-W1 1SP 10A |
| CMVeco-2-160/160-055T | L 0.75kW | U1-V1-W1 1SP 10A |
| CMVeco-4-160/160-025T | L 0.4kW | U1-V1-W1 1SP 10A |
| CMVeco-6-160/160-018T | L 0.4kW | U1-V1-W1 1SP 10A |
| CMVeco-2-200/180-110T | L 1.5kW | U1-V1-W1 1SP 10A |
| CMVeco-4-200/180-025T | L 0.4kW | U1-V1-W1 1SP 10A |
| CMVeco-6-200/180-018T | L 0.4kW | U1-V1-W1 1SP 10A |
| CMVeco-2-200/200-220T | L 2.2kW | U1-V1-W1 1SP 10A |
| CMVeco-4-200/200-055T | L 0.75kW | U1-V1-W1 1SP 10A |
| CMVeco-6-200/200-018T | L 0.4kW | U1-V1-W1 1SP 10A |

| Typ | falownik | wyłącznik serwisowy |
|-----------------------|----------|---------------------|
| CMVeco-2-250/225-400T | L 4.0kW | U1-V1-W1 1SP 10A |
| CMVeco-4-250/225-110T | L 1.5kW | U1-V1-W1 1SP 10A |
| CMVeco-6-250/225-037T | L 0.4kW | U1-V1-W1 1SP 10A |
| CMVeco-2-250/250-400T | L 4.0kW | U1-V1-W1 1SP 10A |
| CMVeco-4-250/250-075T | L 0.75kW | U1-V1-W1 1SP 10A |
| CMVeco-6-250/250-037T | L 0.4kW | U1-V1-W1 1SP 10A |
| CMVeco-4-315/280-150T | L 1.5kW | U1-V1-W1 1SP 10A |
| CMVeco-6-315/280-075T | L 0.75kW | U1-V1-W1 1SP 10A |
| CMVeco-4-315/315-220T | L 2.2kW | U1-V1-W1 1SP 10A |
| CMVeco-6-315/315-075T | L 0.75kW | U1-V1-W1 1SP 10A |
| CMVeco-4-400/400-400T | L 4.0kW | U1-V1-W1 1SP 10A |
| CMVeco-6-400/400-110T | L 1.5kW | U1-V1-W1 1SP 10A |

Numerы artykułów

| | | | | | | | | | |
|-------------|-------------|------------|----------|--------------|----------|--------------|----------|------------------|-------------|
| L 0.4kW | 40016302 | REB-10 | 40025055 | RVS-10 | 40025237 | SC2-1-50L25 | 40025256 | TLR 25 DS | 40025045 |
| L 0.75kW | 40016312 | REB-2.5 N | 40025030 | RVS-3 | 40025234 | SC2-1-75L25 | 40025258 | U1-V1-W1 1SP 10A | 91040908-01 |
| L 1.5kW | 40016322 | REB-2.5 NE | 40025040 | RVS-5 | 40025235 | SC2A1-110L25 | 40025261 | | |
| L 2.2kW | 40016332 | REB-5 | 40025051 | RVS-7 | 40025236 | SC2A1-35L25 | 40025255 | | |
| L 4.0kW | 40016352 | RMB-3.5 | 40025070 | SC2-1-110L25 | 40025260 | SC2A1-50L25 | 40025257 | | |
| L-N 1SP 10A | 91040907-01 | RMB-8 | 40025080 | SC2-1-35L25 | 40025254 | SC2A1-75L25 | 40025259 | | |



regulator
REB

regulator
TLR

regulator
RMB

regulator
RVS

transformator
2-nastawowy

falownik

wyłącznik
serwisowy