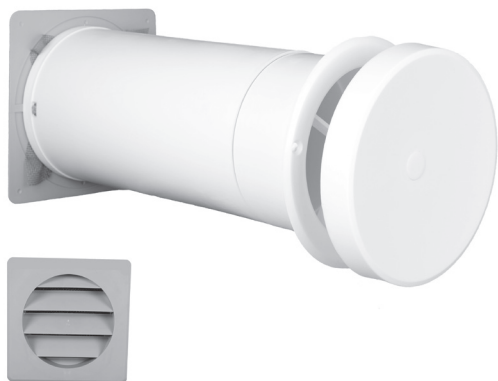


## Telescopic air valves

# ELZ



### Description

ELZ telescopic air valves without thermal insulation supply fresh air to indoor spaces. One end of the ELZ valve has an outdoor air intake vent with louvers and a protective mesh. The other — indoor — end has a round air supply valve with an adjustable opening. The opening size can be adjusted smoothly by rotating the disk closure, or in a three-step adjustment procedure with a pull cable. The outdoor air intake vent and the air supply valve are connected via a telescopic tube. The ELZ telescopic air valve is designed for installation in the outer wall of the building. The maximum wall thickness should be 350 mm or 400 mm, depending on the size of the ELZ valve. The minimum ceiling clearance for the ELZ valve is 100 mm. The area to be ventilated should be provided with two ELZ valves aligned opposite to each other for the best air flow rate. The outdoor air intake vent is finished in grey and the air intake valve is finished in white.

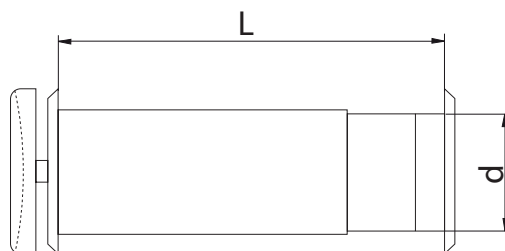
The ELZ telescopic air valves are intended for single-family houses and apartments in multi-family buildings.

#### Product code example

Product code: **ELZ - aaa**

type \_\_\_\_\_  
 Ød \_\_\_\_\_

### Dimensions



Product code	Clear surface area (cm <sup>2</sup> )	d (mm)	L (mm)
ELZ-075	20	77	210/350
ELZ-100	35	105	260/400