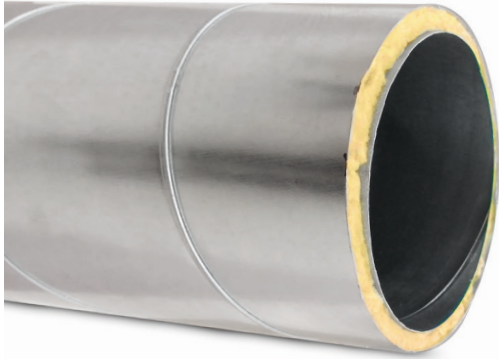


SPRI



Description

The standard duct length is 3000 mm; the sheet thickness for a given diameter is the same as that for the SPR spiral coiled ducts.

The ducts of diameter 250 mm or greater feature outer ribbing to improve the robustness and vacuum pressure strength.

Thermal conductivity:

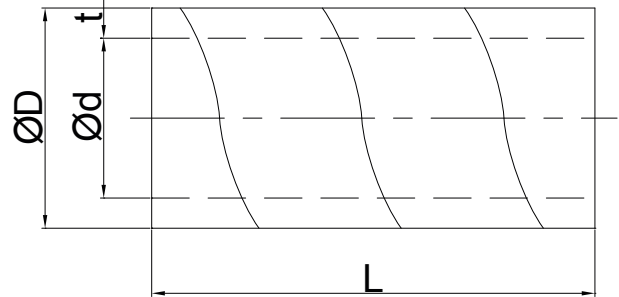
- isolation 10 mm - 0,034 W/mk unchanging time
- isolation 16 mm - 0,034 W/mk unchanging time
- isolation 25 mm - 0,037 W/mk unchanging time

Product code example

Product code: **SPRI - 10 - 100**

type _____
 Insulation _____
 Ød _____

Dimensions



10 mm insulation

Ød [mm]	ØD [mm]	Weight [kg/m]	Ød [mm]	ØD [mm]	Weight [kg/m]
80	100	2.5	180	224	5.0
100	125	3.0	200	224	5.0
125*	150	4.0	200	250	6.6
125	160	4.0	224	250	7.0
140	160	4.0	250	280	7.7
150	180	4.5	250	315	8.5
160	180	4.5	280	315	9.0
180	200	5.0	315	355	11.5

*standard SPRI-10-125 is made of the outer jacket of diameter d=160 mm, it is possible to order the execution of the outer jacket with a diameter of 150 mm, then the sign is as follows: SPRI-10-125-150

16 mm insulation

Ød [mm]	ØD [mm]	Weight [kg/m]	Ød [mm]	ØD [mm]	Weight [kg/m]
80	112	2.9	160	192	5.4
100	132	3.5	180	200	6.0
125	157	4.3	200	232	6.6
150	180	5.0	250	280	8.1

25 mm insulation

Ød [mm]	ØD [mm]	Weight [kg/m]	Ød [mm]	ØD [mm]	Weight [kg/m]
100	150	3.6	250	300	8.5
125	180	4.7	280	315	9.0
140	200	5.0	300	355	11.4
150	200	5.1	315	355	11.5
160	224	5.9	355	400	14.1
180	224	6.3	400	450	15.9
200	250	6.6	450	500	17.3
224	280	7.7	500	560	21.0